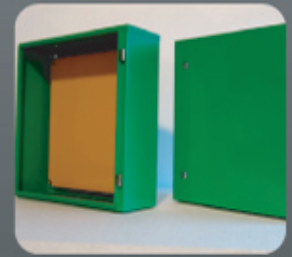
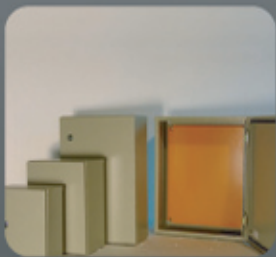
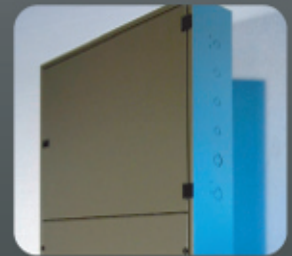




**DISTRIBUTING  
POWER**



**MANUFACTURER & SUPPLIERS  
OF ELECTRICAL ENCLOSURES & SUBSTATIONS**





## **ERCON GROUP Divisions**

### **ERCON MIDDLE EAST INDUSTRIES F.Z.E., AJMAN - U.A.E.**

Development & production of customer specific metal enclosures, form IVs, control desk. A dedicated setup for non-standard production.

### **ERCON MIDDLE EAST INDUSTRIES F.Z.E., SHARJAH - U.A.E**

A Volume Production House, for package substations, standard enclosures. All volume orders are produced here.

### **ERCON MIDDLE EAST INDUSTRIES SAUDIA Co., RIYADH - K.S.A.**

A High Tech., production house for standard metal enclosures as well as cusotmer specific requirements, with the aid of fully automatic & state of art CNC machinery in Kingdom of Saudi Arabia.

## **WHERE QUALITY MEETS THE OBLIGATION**

**Global Market and international growth require a successful company to be innovative, flexible and clearly structured.**

Since on decade, ERCON GROUP of industries is serving different sectors of life through out the GCC countries & worldwide. Like Power distribution, Telecom, Oil field, Medical, Industrial, Defense, Real Estate, Consumer Goods, etc.

**Quality meeting demands is an integral part of our company group culture.**

Quality at ERCON is the matter of the systematic procedure starting from the very beginning with conforming of drawing and specifications. Through continues process all stringent demands of clients and consultants are meet until delivery point. We demonstrate to our employees that commitment and acceptance of responsibility based on trust and cooperation are rewarded. Maintaining the highest quality for our products and first class customer relations are explicit objectives at ERCON GROUP, each and every day. We see it as every employee's obligation to keep this high quality standard and to improve it. At every position, from management to assembly. We are currently certified according to ISO 9001:2000.

**Technology, which have changed manking life to beyond its extent.**

Our plants are equipped with comprehensive & modern technology machineries which are comprised of punching, forming, folding, bending, welding, shearing, shearing machines & is endowed with fully automatic powder coating plants to produce quality products at intenational standard.

**Products, Yes We do understand it's our reputation.**

The product ranges are various in sizes & respectably different in designs. So, in order to meet these challenges, we believe in integrated activity & continous upgradation in our designing & manufacturing technologies. All products, manufactured are being designed & produced with the aid of CAD/CAM Technologies, ensuring Quality and accuracy.

**We do recognize R&D is our key to success.**

Ercon has highly capable and flexible workforce, who continually strive for the perfection and improvement in every aspect of the company and have built over reputation for exceptional quality and customer service. All the materials, which are being used are of varied international standard and form renowed manufacturers. We think the most treasured assets of the company are dedicated and motivated work force and off course the satisfied customer.

The production includes sheet metal enclosures, package substation and low voltage panels, control desks, MDB, SMDBs, final DBs, feeder pillars, sound proof electrical room for generators, in addition to this we are the trader of hardware, panel accessories and electrical components.

Ercon Group with wide range of activities, its modern machineries and qualified experienced technical staff are looking forward to introduce our products with high quality standard. We believe in keeping long-term relations and server you with our better than the best maxim.

## **INDEX**

<b>1.Sample Products</b>	<b>5</b>
<b>2.Enclosures</b>	<b>8</b>
▶ Distribution Board Enclosure	8
▶ Small Size Enclosure	9
▶ Medium Size Enclosure	10
▶ Large Size Enclosure	11
▶ Extendable Type Enclosure	12
▶ Single Wall Aluminium Enclosure	13
▶ Double Wall Aluminium Enclosure	14
▶ Enclosure in Stainless Steel	15
▶ Control Desk	16
▶ Enclosures of Form II	17
▶ Enclosures of Form IV	18
▶ Package Substation in Steel	19
▶ Package Substation in Aluminium	20
▶ Racking System for IT & Telecommunication	21
▶ Sound Proof Electric Room for Generator	22
▶ Explosion Proof Enclosure	23
<b>3.The Ingress Protection (IP)</b>	<b>24</b>
<b>4.Cladding &amp; Fabrication Works</b>	<b>25</b>
<b>5.Trading</b>	<b>26</b>

**SAMPLE PRODUCTS**



Wall Mounted Enclosures



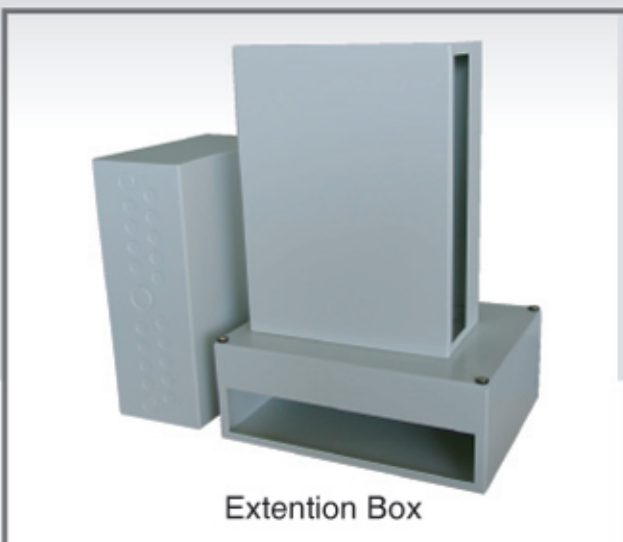
Row Type Distribution Boards



Control Desk



Aluminium Package Substation



Extention Box



IT & Telecommunication Panel

**SAMPLE PRODUCTS**



Package Substation



Sound Proof Electrical Room  
for Generators



Dry Type Transformer Housing



Form IV Enclosure



Aluminium Enclosure

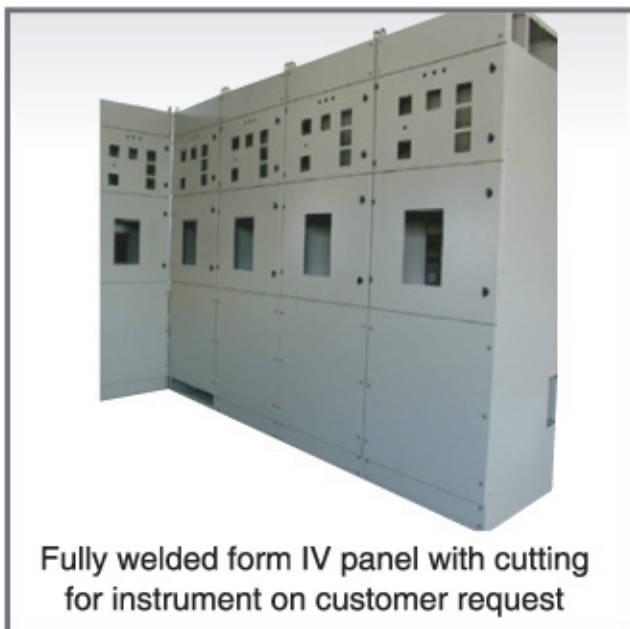


Extendable Enclosure

## EXPERTISE

When it comes to sheet metal fabrication, Ercon takes it very acutely, forming the metal sheets with aid of latest technologies & applied sciences, and in result getting the right solutions for the customer stern needs. The vast experience & technical approach of our team helped our clients to get the right solutions they are looking for, whether they are short at space, ground realities are involve, tough environment of Middle East, our team has always studies the requirement and designed the products which are in accordance with international standard & meet these challenges as well.

Here are few of our sample products, which are exclusively designed by us for our clients.



## ROW TYPE DISTRIBUTION BOARD, IP 42

- ▶ Ercon row types DB are made of galvanized / electro-galvanized steel sheets and are powder coated with RAL 7035. They are available in surface and flush type mounting designs. DB is provided with an adequate gutter space for easy wiring with knock-out on top and bottom for conduit or cable entry. Earth bars and multi split N-bars can be fixed directly on the chassis in adequate length.



## PRODUCT RANGE

### FLUSH TYPE

Product Code	Cover Type	Rows	Dimension (MM)			Steel Thickness (MM)	
			H	W	D	Encl.	Door
EME-16Moudle	Hinged	1 Row	320	460	115	1.0	1.0
EME-32Moudle	Hinged	2 Row	470	460	115	1.0	1.0
EME-48Moudle	Hinged	3 Row	620	460	115	1.0	1.0
EME-64Moudle	Hinged	4 Row	770	460	115	1.2	1.2
EME-80Moudle	Hinged	5 Row	920	460	115	1.2	1.2
EME-96Moudle	Hinged	6 Row	1070	460	115	1.2	1.2

### SURFACE TYPE

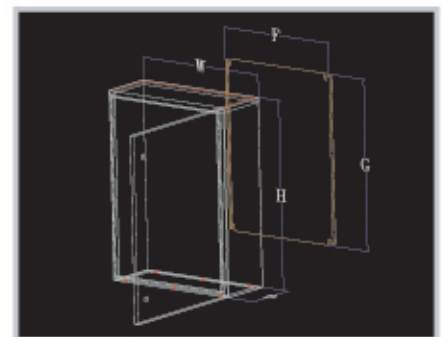
Product Code	Cover Type	Rows	Dimension (MM)			Steel Thickness (MM)	
			H	W	D	Encl.	Door
EME-16Moudle	Hinged	1 Row	310	450	115	1.0	1.0
EME-32Moudle	Hinged	2 Row	460	450	115	1.0	1.0
EME-48Moudle	Hinged	3 Row	610	450	115	1.0	1.0
EME-64Moudle	Hinged	4 Row	760	450	115	1.2	1.2
EME-80Moudle	Hinged	5 Row	910	450	115	1.2	1.2
EME-96Moudle	Hinged	6 Row	1060	450	115	1.2	1.2

**Note:** Other IP Ratings and colours are available on customer request.



## WALL MOUNTED ENCLOSURE (SMALL SIZE), IP 55

- ▶ Small type enclosures are manufactured in galvanized / electro-galvanized steel sheet and are electro-statically powder coated with RAL 7032 finished texture for enclosures and RAL 2000 for mounting plate.
- ▶ Enclosures are provided with a flange opening for a cable entry with a gasketed gland plates and are fixed with round neoprene seals.
- ▶ Doors are fitted concealed hinges and are polyurethane foam gasket for dust and water resistance.
- ▶ Rear wall of the enclosure is provided with wall fixing hole. The mounting plate is prepared for optimum utilization of enclosures space and is held by strong stud / bolts.



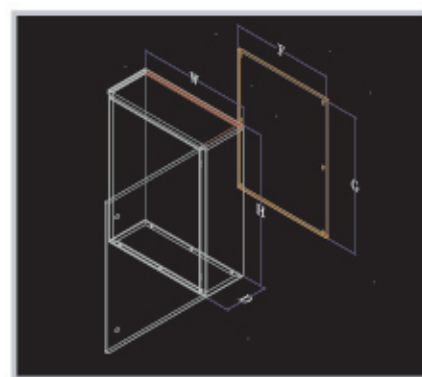
## PRODUCT RANGE

Product Code	Cover Type	Dimension (MM)			Usable Depth (MM)	Mounting Hole Center (MM)		M Plate Dimension (MM)		Steel Thickness (MM)		
		H	W	D		H	W	G	F	Encl	Door	M Plate
EME-252015	Hinged	250	200	150	125	140	105	175	140	1	1	1.5
EME-302515	Hinged	300	250	150	125	190	155	225	190	1	1	1.5
EME-403020	Hinged	400	300	200	175	290	205	325	240	1	1	1.5
EME-504020	Hinged	500	400	200	175	390	305	425	340	1	1	1.5
EME-505020	Hinged	500	500	200	175	390	405	425	440	1	1	1.5
EME-605020	Hinged	600	500	200	175	490	405	525	440	1	1	1.5
EME-606020	Hinged	600	600	250	225	490	505	525	540	1	1	1.5
EME-705025	Hinged	700	500	250	225	590	405	625	440	1.2	1.2	1.5
EME-806025	Hinged	800	600	250	225	690	505	725	540	1.2	1.2	1.5
EME-806020	Hinged	800	800	250	175	690	705	725	740	1.2	1.2	2.0
EME-808025	Hinged	800	800	250	225	690	705	725	740	1.2	1.2	2.0
EME-808030	Hinged	800	800	300	275	690	705	725	740	1.2	1.2	2.0

**Note:** Other IP Ratings and colours are available on customer request.

## WALL MOUNTED ENCLOSURE (MEDIUM SIZE), IP 55

- ▶ Medium size enclosures are manufactured in galvanized / electro-galvanized steel sheet and are powder coated with RAL 7032 finished texture for enclosures and RAL 2000 for Mounting Plate.
- ▶ Enclosures are provided with a standard detachable mounting plate for installation of components.
- ▶ Doors are fitted with a continuous polyurethane foam gasket or door sealed to ensure a degree of protection.
- ▶ Rear wall of the enclosure is provided with wall fixing hole.



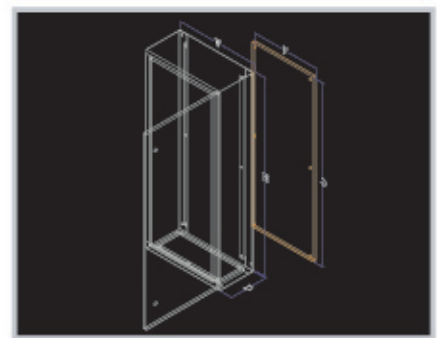
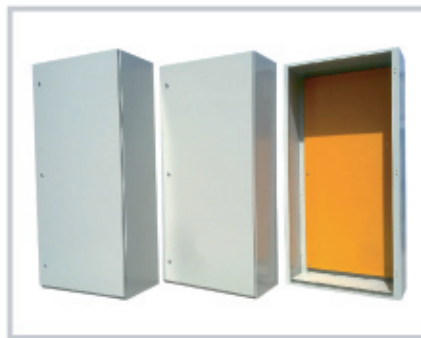
## PRODUCT RANGE

Product Code	Cover Type	Dimension (MM)			Usable Depth (MM)	Mounting Hole Center (MM)		M Plate Dimension (MM)		Steel Thickness (MM)		
		H	W	D		H	W	G	F	Encl	Door	M Plate
EME-106020	Hinged	1000	600	200	175	890	505	925	540	1.2	1.2	2.0
EME-106025	Hinged	1000	600	250	225	890	505	925	540	1.2	1.2	2.0
EME-106030	Hinged	1000	600	300	275	890	505	925	540	1.2	1.2	2.0
EME-108030	Hinged	1000	800	200	175	890	702	925	740	1.2	1.2	2.0
EME-108025	Hinged	1000	800	250	225	890	705	925	740	1.2	1.2	2.0
EME-108030	Hinged	1000	800	300	275	890	705	925	740	1.2	1.2	2.0
EME-101025	Hinged	1000	1000	250	225	890	905	925	940	1.2	1.2	2.0
EME-101030	Hinged	1000	1000	300	275	890	905	925	940	1.2	1.2	2.0

**Note:** Other IP Ratings and colours are available on customer request.

## FLOOR STAND ENCLOSURE (LARGE SIZE) IP 55

- ▶ Large size enclosures are manufactured in galvanized / electro-galvanized steel sheet and are powder coated with RAL 7032 finished texture for enclosures and RAL 2000 for mounting plate.
- ▶ Enclosures are supplied with a detachable semi-concealed hinges with 130° opening angle and are fitted with neoprene gasket.
- ▶ A large cable passage area is provided by a removable gland plate.
- ▶ The doors of the enclosure are equipped with lock which ensures that the doors are firmly locked.



## PRODUCT RANGE

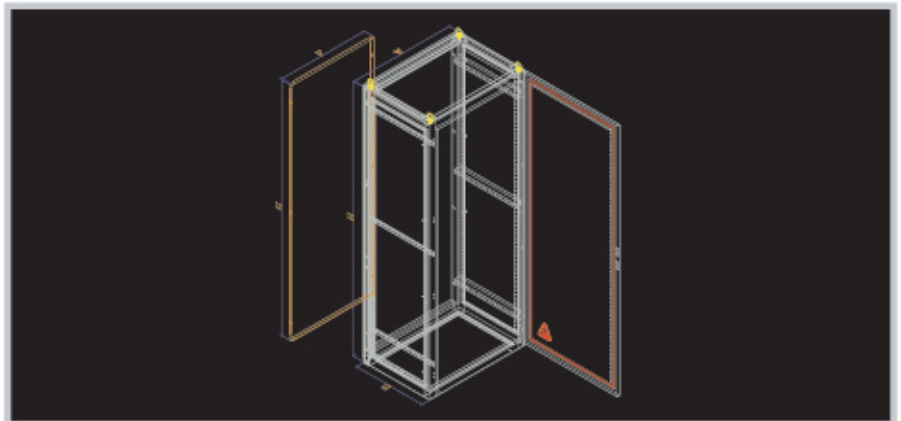
Product Code	Cover Type	Dimension (MM)			Usable Depth (MM)	Doors Qty.	M Plate Dimension (MM)		Steel Thickness		
		H	W	D			G	F	Encl	Door	M Plate
EME-146025	Hinged	1400	600	250	225	1	1300	500	1.5	1.5	2.0
EME-146030	Hinged	1400	600	300	275	1	1300	500	1.5	1.5	2.0
EME-148025	Hinged	1400	800	250	225	1	1300	700	1.5	1.5	2.0
EME-148030	Hinged	1400	800	300	275	1	1300	700	1.5	1.5	2.0
EME-141025	Hinged	1400	1000	250	225	1	1300	900	1.5	1.5	2.0
EME-141030	Hinged	1400	1000	300	275	1	1300	900	1.5	1.5	2.0
EME-141230	Hinged	1400	1200	300	275	2	1300	1100	1.5	1.5	2.5
EME-166030	Hinged	1600	600	300	275	1	1500	500	1.5	1.5	2.0
EME-168030	Hinged	1600	800	300	275	1	1500	700	1.5	1.5	2.0
EME-161025	Hinged	1600	1000	250	225	1	1500	900	1.5	1.5	2.0
EME-161030	Hinged	1600	1000	300	275	1	1500	900	1.5	1.5	2.0
EME-161230	Hinged	1600	1200	300	275	2	1500	1100	1.5	1.5	2.5
EME-161240	Hinged	1600	1200	400	375	2	1500	1100	1.5	1.5	2.5
EME-186030	Hinged	1800	600	300	275	1	1700	500	1.5	1.5	2.0
EME-188030	Hinged	1800	800	300	275	1	1700	700	1.5	1.5	2.0
EME-181025	Hinged	1800	1000	250	225	1	1700	900	1.5	1.5	2.0
EME-181030	Hinged	1800	1000	300	275	1	1700	900	1.5	1.5	2.0
EME-181230	Hinged	1800	1200	300	375	2	1700	1100	1.5	1.5	2.5
EME-181240	Hinged	1800	1200	400	375	2	1700	1100	1.5	1.5	2.5

**Note:** Other IP Ratings and colours are available on customer request.

## EXTENDABLE ENCLOSURES, IP 54



- ▶ Extendable size enclosures are manufactured in galvanized/ electro-galvanized steel sheet and are powder coated with RAL 7032 finished texture for enclosures and RAL 2000 smooth for Mounting Plate.
- ▶ The enclosures are easily joinable to any width for the most demanding main applications.
- ▶ Doors are provided with continuous polyurethane foam gasket or door sealed to ensure a degree of protection.
- ▶ The rear and side covers can be easily removable.
- ▶ A large cable entry area is provided through detachable gland plates.
- ▶ Mounting plates can be fixed to any depth facilitates easy installation of components and are electro-statically powder coated with RAL 2000 smooth.

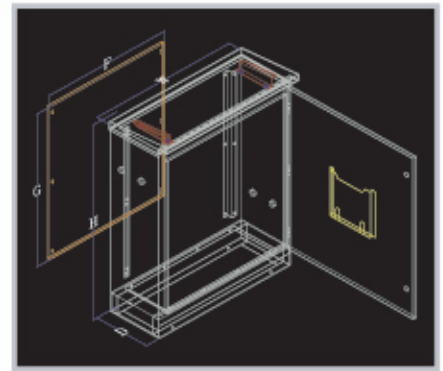
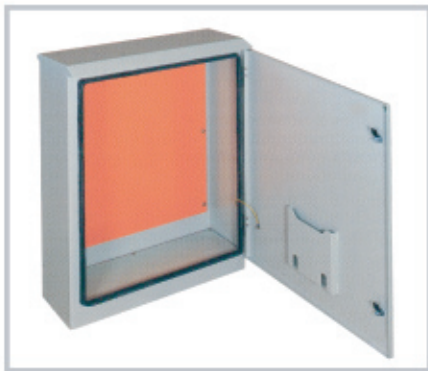


Product Code	Cover Type	Dimension (MM)			Usable Depth (MM)	Doors Qty.	M Plate Dimension (MM)		Steel Thickness		
		H	W	D			G	F	Encl	Door	M Plate
EME-EXT-6060	Hinged	2000	600	600	548	1	1860	492	2.0	2.0	2.5
EME-EXT-8060	Hinged	2000	800	600	548	1	1860	492	2.0	2.0	2.5
EME-EXT-10060	Hinged	2000	1000	600	548	1	1860	492	2.0	2.0	2.5
EME-EXT-12060	2Hinged	2000	1200	600	548	2	1860	492	2.0	2.0	2.5
EME-EXT-6080	Hinged	2000	600	800	748	1	1860	692	2.0	2.0	2.5
EME-EXT-8080	Hinged	2000	800	800	748	1	1860	692	2.0	2.0	2.5
EME-EXT-10080	Hinged	2000	1000	800	748	1	1860	692	2.0	2.0	2.5
EME-EXT-12080	2Hinged	2000	1200	800	748	2	1860	692	2.0	2.0	2.5

**Note:** Other IP Ratings and colours are available on customer request.

## SINGLE WALL ALUMINIUM ENCLOSURES, IP 65

- ▶ Single wall enclosures are made of corrosion resistant aluminium sheets and are powder coated with RAL 7032.
- ▶ Doors are provided with detachable fibre reinforced polyester hinges (non corrosions mater) with 180° degree opening angle.
- ▶ Enclosures are fitted with superior quality of gaskets keeping in view of climatic conditions.



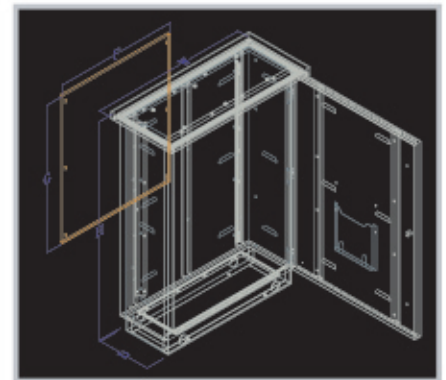
## PRODUCT RANGE

Product Code	Cover Type	Dimension (MM)			Steel Thickness		
		Height	Width	Depth	Enclosure	Door	M Plate
EAS - 705025	Hinged	700	500	250	3	3	2
EAS - 806025	Hinged	800	600	250	3	3	2
EAS - 1008025	Hinged	1000	800	250	3	3	2
EAS - 12010030	Hinged	1200	1000	300	3	3	2.5
EAS - 12012035	2Hinged	1200	1200	350	3	3	2.5
EAS - 14010035	2Hinged	1400	1000	350	3	3	2.5
EAS - 14012035	2Hinged	1400	1200	350	3	3	2.5
EAS - 15012035	2Hinged	1500	1200	350	3	3	2.5

**Note:** Other IP Ratings and colours are available on customer request.

## DOUBLE WALL ALUMINIUM ENCLOSURE, IP 65

- ▶ Our double wall Aluminium enclosures are made of corrosion resistant Aluminium sheets and powder coated with RAL 7032.
- ▶ The system is completely ventilated having an air flow in between the outer and inner cabinet.
- ▶ The air flow sucks the warm air from the cabinet by Ventures Effect, significantly lowering the interior temperature and thus protecting the interior sensitive electrical components.
- ▶ Doors are fitted with 180° opening angle and are provided with high quality gaskets which are resistant to environmental temperature, humidity and salinity.
- ▶ Side and rear walls of the enclosures is fitted with revert nuts for fitting channels for partial or full mounting plates.



## PRODUCT RANGE

Product Code	Cover Type	Dimension (MM)			Steel Thickness		
		Height	Width	Depth	Enclosure	Door	M Plate
EAD - 705025	Hinged	700	500	250	3	3	2
EAD - 806025	Hinged	800	600	250	3	3	2
EAD - 1008025	Hinged	1000	800	250	3	3	2
EAD - 12010030	Hinged	1200	1000	300	3	3	2.5
EAD - 12012035	2Hinged	1200	1200	350	3	3	2.5
EAD - 14010035	2Hinged	1400	1000	350	3	3	2.5
EAD - 14012035	2Hinged	1400	1200	350	3	3	2.5
EAD - 15012035	2Hinged	1500	1200	350	3	3	2.5

**Note:** Other IP Ratings and colours are available on customer request.

## ENCLOSURE IN STAINLESS STEEL

- ▶ These types of enclosures are manufactured in various sizes in stainless steel sheets and are powder coated with RAL 7032.
- ▶ Doors are fitted with semi-concealed hinges and a continuous polyurethane foam gasket or door sealed to ensure a degree of protection.
- ▶ Mounting plates are made in different thickness depending upon the requirement as well as in standard thickness of sheet and they are powder coated with RAL 2000 smooth.
- ▶ A large cable entry area is provided through a removable gland plates.
- ▶ Enclosure can be provided with canopy on client's request.
- ▶ The enclosure is welded firmly to with stand all operating needs and special environmental conditions.



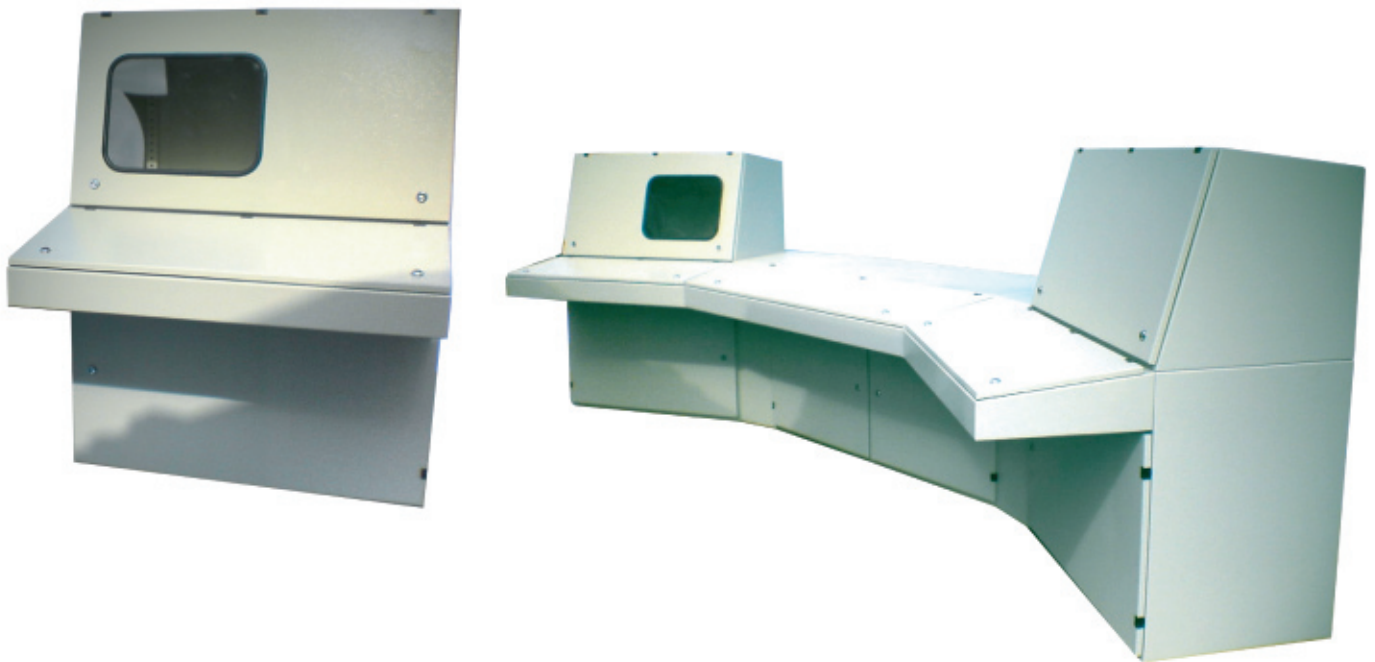
## PRODUCT RANGE

Product Code	Cover Type	Dimension			Steel Thickness		
		Height	Width	Depth	Enclosure	Door	M Plate
EME - 302515	Hinged	300	250	150	1.2	1.2	1.5
EME - 403020	Hinged	400	300	200	1.5	1.5	2
EME - 504020	Hinged	500	400	200	1.5	1.5	2
EME - 605020	Hinged	600	500	200	1.5	1.5	2
EME - 806030	Hinged	800	600	200	1.5	1.5	2
EME - 1006030	Hinged	1000	600	300	2	2	2
EME - 12010030	Hinged	1200	1000	300	2	2	2
EME - 12012030	Hinged	1200	1200	300	2	2	2
EME - 14010030	Hinged	1400	1000	300	2	2	2

**Note:** Other IP Ratings and colours are available on customer request.

## CONTROL DESK

- ▶ Ercon's control desk are galvanized / electro-galvanized steel sheet and are powder coated with RAL 7032.
- ▶ They are being manufactured taking in view of all the climatic conditions and are vigilantly observed at all process to ensure product quality.
- ▶ Doors of the control desk are equipped with semi concealed hinges and a continuous polyurethane foamed gasket or door sealed to ensure a degree of protection.
- ▶ Back doors are easily removable and mounting plates are easily adjustable for any depth.
- ▶ They have detachable lower aide panels.



Product Code	Cover Type	Dimension (MM)			Steel Thickness		
		Height	Width	Depth	Enclosure	Door	M Plate
EME - CD 100	Hinged	1000	800	600	1.5	1.5	2
EME - CD 120	Hinged	1200	1000	600	2	2	2
EME - CD 140	Hinged	1400	1000	800	2	2	2/2.5
EME - CD 160	Hinged	1600	1200	800	2	2	2/2.5
EME - CDL 160	Hinged	1800	1400	800	2	2	2/2.5

**Note:** Other IP Ratings and colours are available on customer request.



## FORM II ENCLOSURES

- ▶ Form II Enclosures are of galvanized / electro-galvanized steel sheets and are powder coated with RAL 7032.
- ▶ The interior temperature of the enclosure is lowered due to its special design, significantly protecting the inner sensitive equipments.
- ▶ The doors of this system are equipped with high quality rubber gaskets and are provided by removable semi-concealed hinges.
- ▶ The front door of the system is fitted with a lock, which assures that the doors are shut completely.
- ▶ Bus bar separation is achieved by insulated coverings and is well protected against contact with internal live parts of components.



## FORM IV ENCLOSURES

- ▶ Form IV Enclosures are designed according to client's requirement. Our enclosures are manufactured in various sizes with galvanized / electro-galvanized steel sheets and are powder coated with RAL 7032.
- ▶ The enclosures are easily joinable to any width for the most demanding main applications.
- ▶ Doors are provided with continuous polyurethane foam gasket or door sealed to ensure a degree of protection.
- ▶ The rear and side covers can be easily removable and a large cable entry area is provided through detachable gland plates.
- ▶ Form IV is manufactured in such a way, to avoid contact with internal live parts and compartments and there is an external separation of the bus bar system from functional units from one another.



## PACKAGE SUBSTATION IN STEEL

- ▶ Our package substations are manufactured with galvanized / electro-galvanized steel sheets and electro-statically powder coated with RAL 7032.
- ▶ They are corrosion resistant and are built to withstand environmental temperature, humidity and salinity.
- ▶ Substations are ideally designed, which enables it to be assembled with the transformers, Ring main unit or the Switchgear unit.
- ▶ They are assembled and tested to provide an aesthetically pleasing close coupled assembly, reducing installation time cost.
- ▶ The Substation contains 3 main compartments for transformer, MV Switchgear & LV Switchgear. The compartments are segregated by partition sheets.
- ▶ They are provided with gas spring stoppers and heavy duty hinges to avoid distortion and misalignment.
- ▶ The Substations are duly fitted with locks, which are provided with door swing handles for firmly locking.



## **PACKAGE SUBSTATION IN ALUMINIUM**

- ▶ Package substation manufactured in 2 and 3 mm Aluminium sheets are well designed for power supply for Small, Medium and Large industrial plants exposed to high humidity and hostile climatic conditions.
- ▶ We have different type products available in this category with protection degree of IP42/IP54 and standard cycle thermosetting epoxy polyester powder coating RAL 7032 colour finish.
- ▶ Othe size, colour and special finish can be offered on client request.



## **RACKING SYSTEM FOR IT & TELECOMMUNICATION**

- ▶ They are specially designed to suite the requirements of the IT and communication departments. It is being manufactured with galvanized / electro-galvanized steel sheets and are electro-statically powder coated with RAL 7032, which makes them highly corrosion resistant.
- ▶ They are uniquely designed to lesson the interior temperature, thus protecting the inner sensitive equipments. The doors of this system are equipped with high quality rubber gaskets and are provided by removable semi-concealed hinges with 180° opening angle. The front door of the system is fitted with a lock, which assures that the doors are shut completely and is equipped with the keys to evade any type of thievery.



## **SOUND PROOF ELECTRICAL ROOM FOR GENERATORS**

- ▶ They are robust, well sheltered against climatic conditions and are corrosion resistant. The painting for the electric room is done by standard cycle thermosetting epoxy polyester powder, which ensures a high protection.
- ▶ All the corners are precisely welded and are scrutinized to ensure the better finish ultimately lessens the vibration.
- ▶ The perfectly sound proof doors are lined with a fire proof fibre that offers exceptional safety uniqueness.
- ▶ The lock guarantees that the doors are shut completely and are equipped with the keys to avoid any rest of the body work.
- ▶ They are made of galvanized / Electro-galvanized steel sheets and are uniquely designed for the ease in transportation and maintenance.
- ▶ The large doors permit easy access to the interior, whether it is for the component or to carry out routine maintenance operations.



## **EXPLOSION PROOF ENCLOSURE**

- ▶ Explosion proof enclosures are of various and are uniquely designed to withstand the vast climatic conditions and are highly resistant to explosions.
- ▶ They are being manufactured with galvanized / electro-galvanized steel sheet / stainless steel and are powder coated with RAL 7032, which is being treated under high temperature for great resistance from the external elements.
- ▶ The doors of this enclosure are equipped with the special type of hinges and are provided with a continuous polyurethane foam gasket, to ensure the maximum protection from gas, dust and water.
- ▶ Doors of this enclosure are fitted with a special type of locks and are provided with keys.



## DESIGNATION OF THE INGRESS PROTECTION (IP)

The ingress protection (IP) for enclosures up to 1000V A.C is defined standard IEC 529-19889, EN60529, DIN VDE 0470 Part 1.11.92, B.S.5490-1985 and NFC 20-010. The IP code characterizes the ability of the enclosures to with stand external influences, as per latest DIN VDE 0470 it comprises up to 4 digits, depending on the specification relating to such influences.

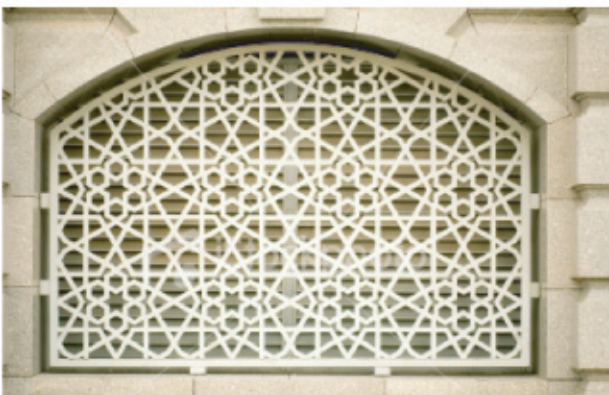
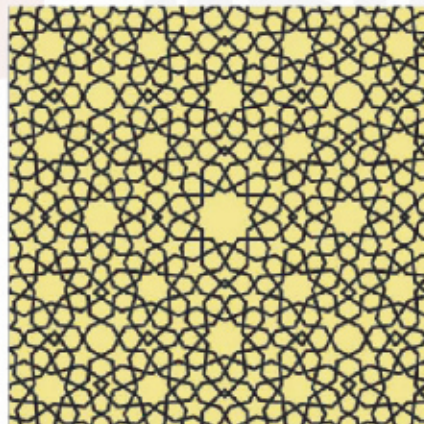
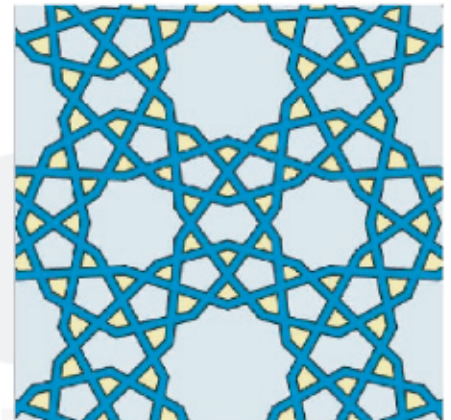
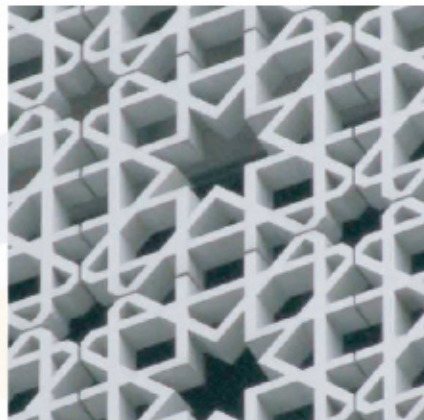
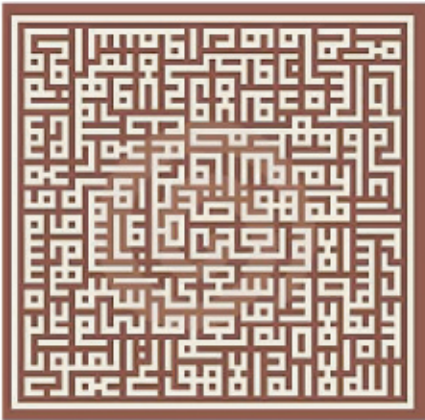
The first digit indicates the protection against ingress of solid object. Either digit has to be substituted with an x. if no digits specified. The third digit in an optional letter A, B, C or D and characterizes the access to dangerous part with tools. The fourth digit an optional letter H, M, S or W and with characterizes with the effect of liquid to dangerous parts.

Protection against solid bodies			Protection against liquids		
IP	Test	Definition	IP	Test	Definition
0		Non-Protected	0		Non-Protected
1		Protection against solid objects greater than 50 mm	1		Protection against dripping water
2		Protection against solid objects greater than 12 mm	2		Protection against dripping water tilted up to 15°
3		Protection against solid objects greater than 2.5 mm	3		Protection against spraying water
4		Protection against solid objects greater than 1.0 mm	4		Protection against splashing water
5		Dust Protected	5		Protection against water jets
6		Dust Tight	6		Protection from projection of water similar to marine swells
			7		Protection against the effect of immersion
			8		Protection against the effect of prolonged immersion



## CLADDING AND FABRICATION WORKS

We are doing all type of cladding and fabrication works in sheets steel and stainless steel using latest Turret Punching Machines. All the above products are designed and manufactured with local and international standard and specification as per client's and consultant's requirements.



## TRADING DIVISION

We are specialized in powder coating plants, accessories, spare parts. We also provide all types electrical accessories. Engraved labling on P.V.C. / Aluminium Stainless Steel.

## ACCESSORIES



## AJMAN



## HAMRIYAH FREE ZONE



## K.S.A. - RIYADH





**ERCON  
GROUP**

# **ERCON GROUP Divisions**

## **ERCON MIDDLE EAST INDUSTRIES F.Z.E., AJMAN, U.A.E.**

AJMAN FREE ZONE  
P.O.BOX: 3026 , AJMAN-U.A.E.

Tel: +971 6 7427558 , Fax: +971 6 7427939  
E-mail: [erconme1@eim.ae](mailto:erconme1@eim.ae)  
URL: [www.erconme.com](http://www.erconme.com)

Trade License No. 886  
Chamber of Commerce No. 29435

## **ERCON MIDDLE EAST INDUSTRIES F.Z.E., SHARJAH, U.A.E.**

Hamriya Free Zone  
P.O.BOX: 42834 , Sharjah-U.A.E.

Tel: +971 6 7427558 , Fax: +971 6 7427939  
E-mail: [hamriya@ercon.ae](mailto:hamriya@ercon.ae)  
URL: [www.erconme.com](http://www.erconme.com)

Trade License No. 2021  
Chamber of Commerce No. 800938

## **ERCON MIDDLE EAST INDUSTRIES SAUDIA Co., RIYADH, KSA**

Solae, Al Fozaan Industrial Area  
P.O.BOX: 2783 , Al Riyadh Number: 11461

Tel: +966 1 4158954, Fax: +966 1 2148452  
Al Riyadh – Saudia Arabia  
Email: [erconksa@erconme.com](mailto:erconksa@erconme.com)  
URL: [www.erconme.com](http://www.erconme.com)

Trade License No. 1010252290  
C.C. 200747