

PROJECT DETAILS



PROJECT DETAILS

PROJECT NAME : RAK AIRPORT EXPANSION

CLIENT : Rak Airport authority, Rasal Khaima

CUSTOMER : Rak Industry

SYSTEM : ABB AC 500 PLC with HMI.

SCOPE OF WORK : Complete load management and load sharing using PLC control and monitoring facility.

PROJECT DETAILS

PROJECT NAME : Supply of Sales Gas to TAKREER NORM Project at BAAT Ruwais Plant

CLIENT : Abu Dhabi Gas Industries Ltd. (GASCO)

CUSTOMER : Tecton Engineering

PLC USED : Siemens Simatic S7 1214 PLC.

SCOPE OF WORK : This project includes one MCC panel and one PLC panel for the complete control and monitoring of HVAC system. Both the systems have been designed with complete Siemens components.



PROJECT DETAILS

- PROJECT NAME** : Lube oil flow control system
- CLIENT** : Emirates Lube Oil Company.
- PLC USED** : ABB AC 500 series PLC (PM 573ETH).
- SCOPE OF WORK** : The scope of works include complete monitoring and control of flow line integrated with electromagnetic flow meter and level transmitter.



PROJECT DETAILS

PROJECT NAME : 5000 CMPD STP King Khaled Air Base
Khamish Moshait.

CLIENT : Ministry of Defence, Saudi Arabia

CUSTOMER: Washnah Water Equipment

PLC USED: Schneider Modicon M340 PLC and Citect
SCADA system.

SCOPE OF WORK : This Complete electrical package includes 3 different MCC panels of form II with MDB panels and Capacitor bank. The PLC system has been integrated with the MCC panels. And the control system includes Vijeo Citect SCADA and M340 PLC. Scope included supply, design, integration, engineering, testing and commissioning at site.

The communication between the Master station, remote IO station and the SCADA system has been established through fiber optic cable. All these MCC1 and MCC3 systems are kept with a distance of 1 to 10 kilometers from the master station (MCC 2).



The complete system is designed with safe engineering concept for the smooth operation of the plant. All vendor packages including dosing systems. Odour control system has been integrated to the main PLC via suitable protocols and operated from SCADA system.



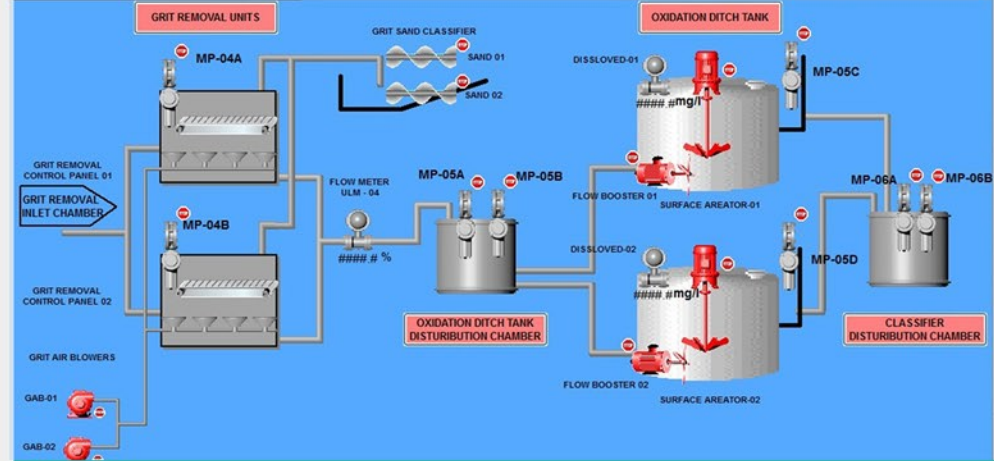
Kingdom of Saudi Arabia
Ministry of Defense
Royal Saudi Air Force
Engineering & Works Department

المملكة العربية السعودية
وزارة الدفاع
القوات الجوية الملكية السعودية
إدارة الهندسة والبناء

GRIT REMOVAL / OXIDATION SYSTEM

WASHMAM Trading & Contracting
PROCESSES AND FACILITIES FOR WATER TREATMENT
C.R.No. 403877M - S.C.No. 4198

شركة تجارة وشؤون
المهندسين والمقاولين
رقم الترخيص: ٤٠٣٨٧٧ م - رقم السجل: ٤١٩٨ س



Vijeo Citect



PROJECT DETAILS

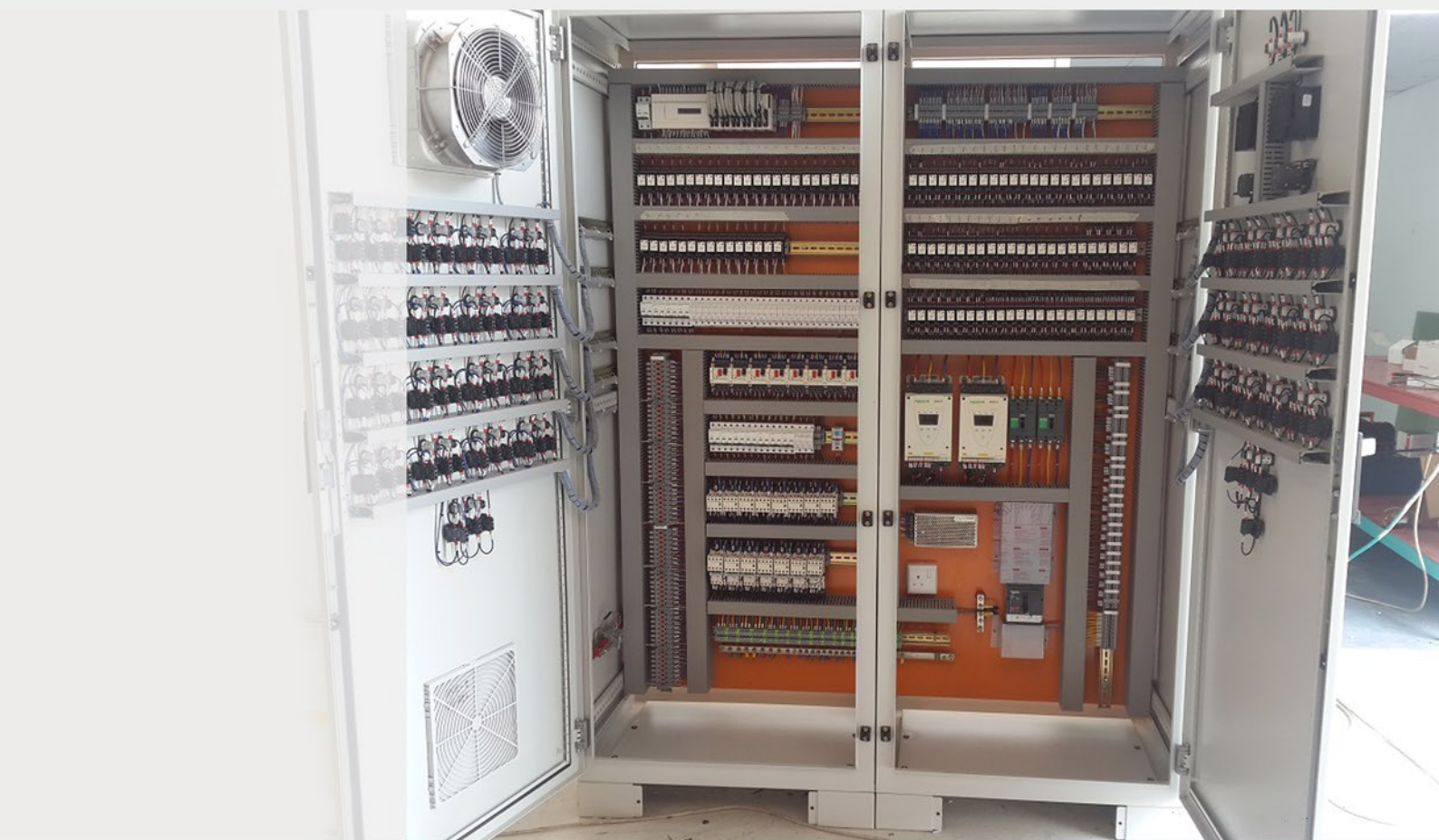
PROJECT NAME : 200m³/Day Mini RO Plant for North Riyadh, Saudi Arabia.

CLIENT : Ministry of Water and Electricity, Saudi Arabia

CUSTOMER : Washnah Water Equipment

PLC USED : Schneider Twido PLC system with Vijeo Citect SCADA.

SCOPE OF WORK : This project includes 6 similar electrical and control system for 6 RO plants located in the North Riyadh areas. Each system includes One MDB panel, One Capacitor Bank Panel, One MCC panel of form II with the PLC integrated. Scope included supply, design, integration, engineering, testing and commissioning at site.



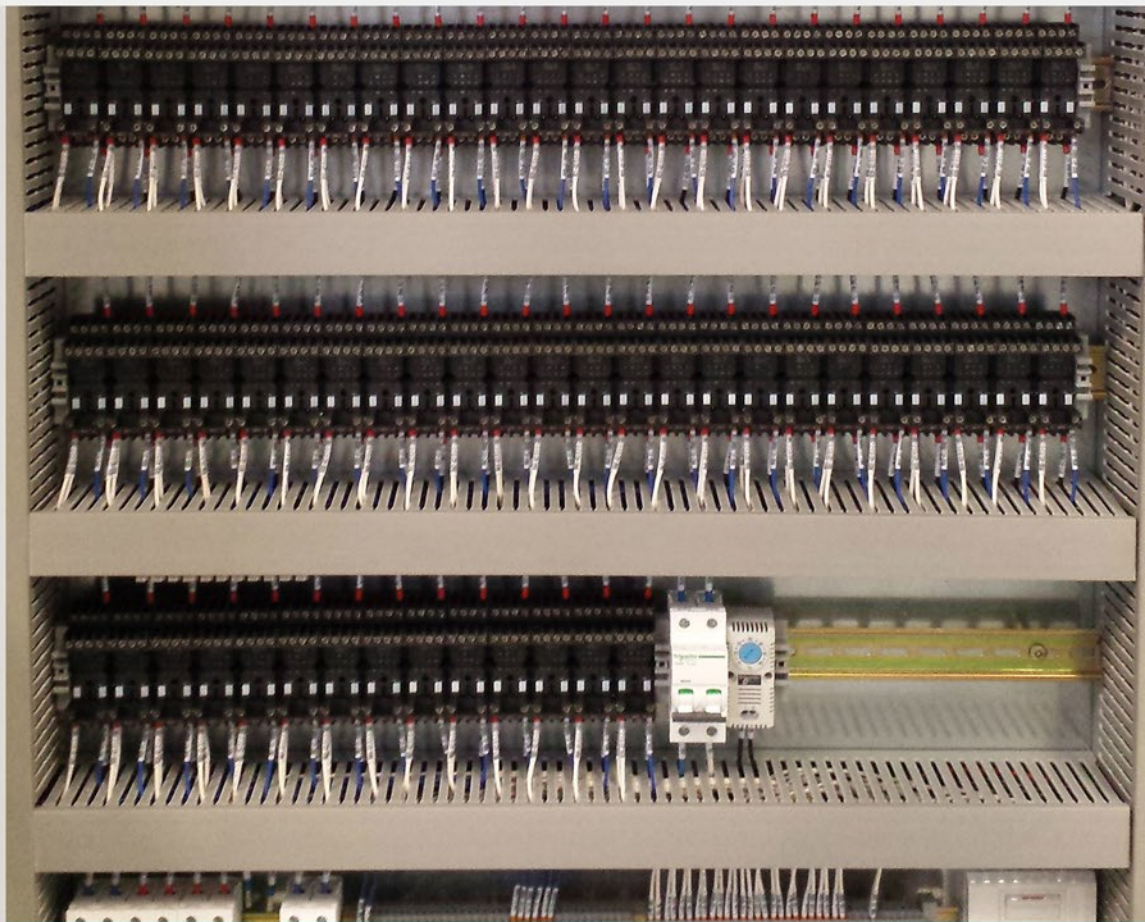


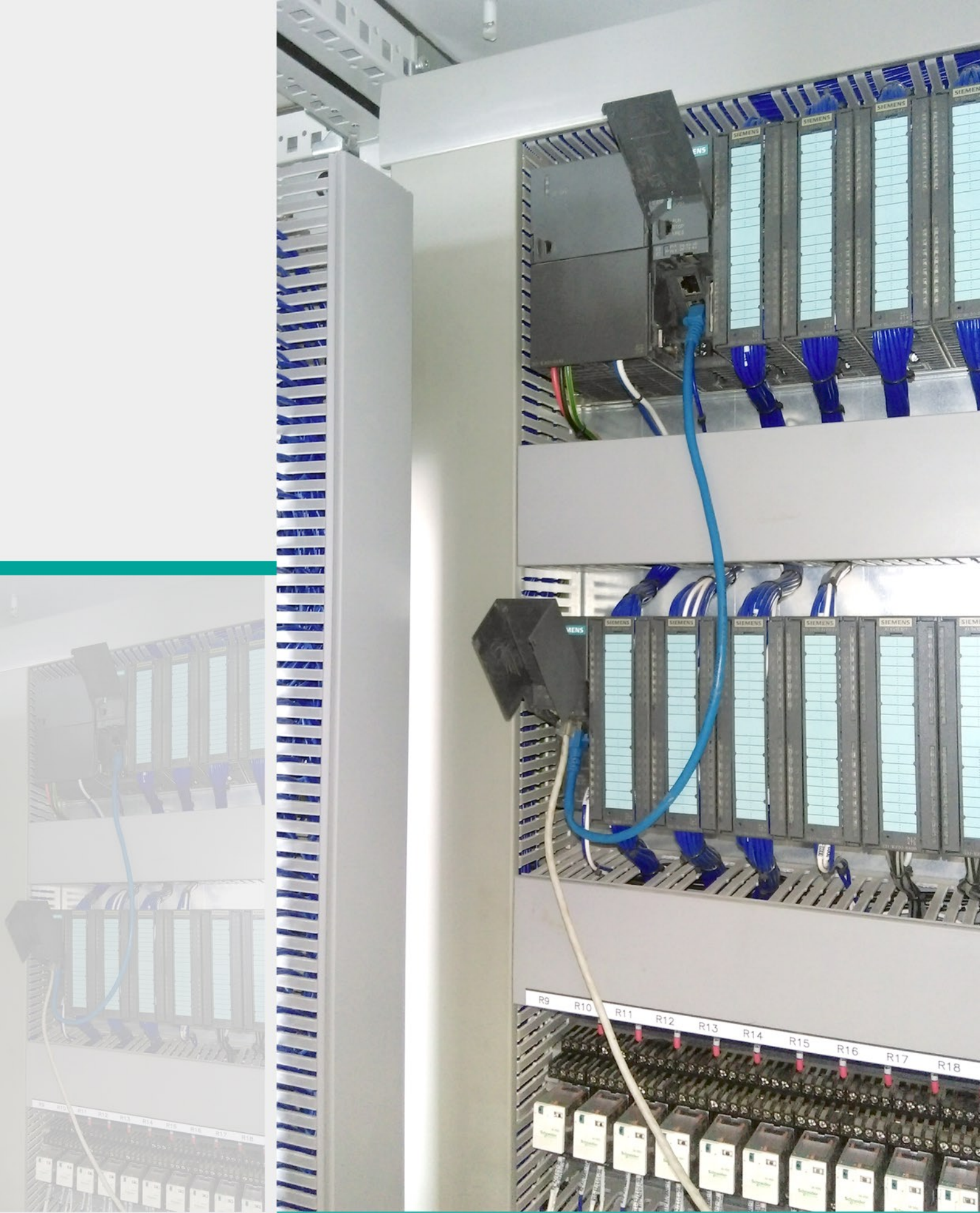
The complete system is designed with safe engineering concept for the smooth operation of the plant and simple operation. All vendor packages including dosing systems. Odour control system has been integrated to the main PLC via Modbus TCP and operated from SCADA system.



PROJECT DETAILS

- PROJECT NAME :** 2000 CMPD STP for Al Suleyil, Saudi Arabia
- CLIENT :** Ministry of Water and Electricity, Saudi Arabia
- CUSTOMER:** Washnah Water Equipment
- PLC USED:** Siemens S7 315 PLC with ET 200M Remote IO system.
- SCOPE OF WORK :** This project includes 2 MCC panels integrated with the PLC system. It has two different S7- 315 processor with ET 200M RIO station. The master station is communicating with an Omron PLC. The system has been integrated with a WinCC SCADA which is installed in the control room. Scope included supply, design, integration, engineering, testing and commissioning at site.







PROJECT DETAILS

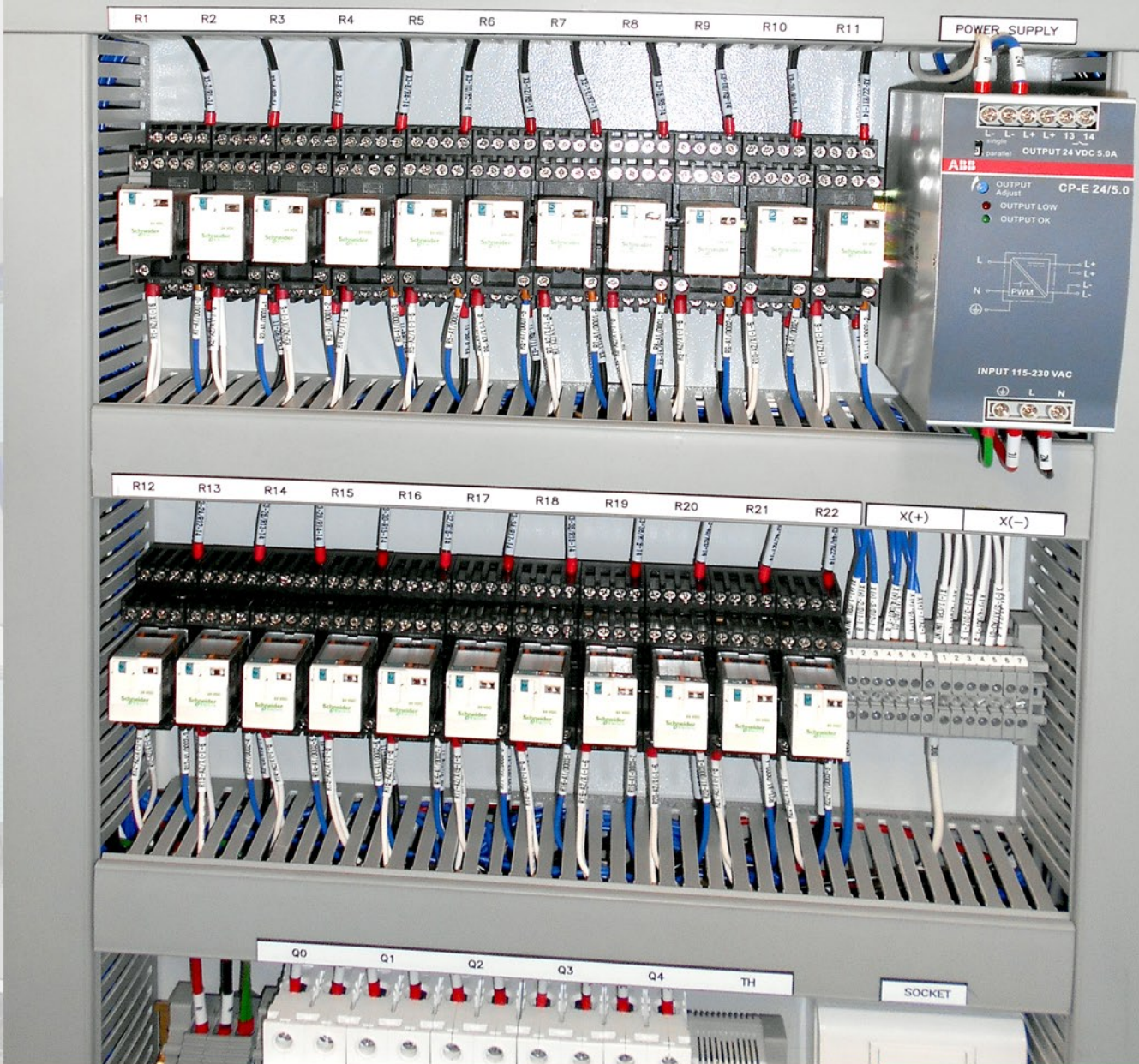
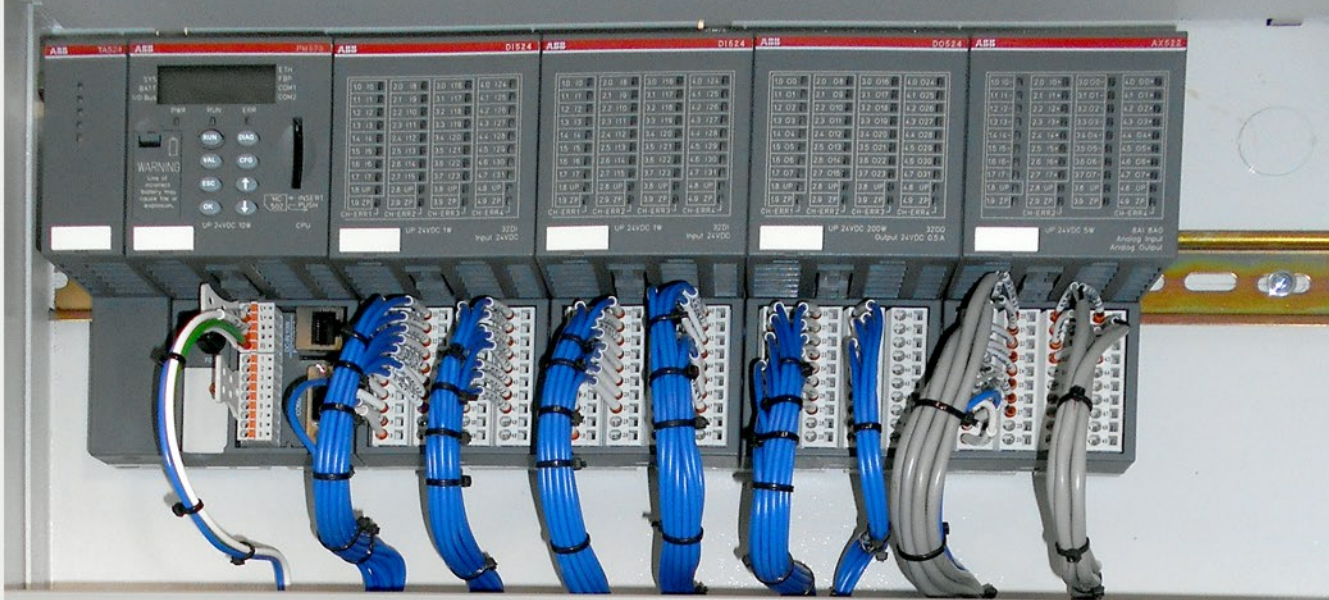
PROJECT NAME : Irrigation Pump Station for housing Program
Al Madina Al Munnawaraa

CLIENT : Infrastructure Jeddah, Saudi Arabia

CUSTOMER : PPCO

PLC USED : ABB AC 500 series PLC (PM 573ETH) Hot
redundant PLC processor, with Wonder ware
SCADA system.

SCOPE OF WORK : The control system monitor and control the
operation of pumps and retain required
pressure and flow in the pipe line. Complete
panel is FORM IV design with separate
compartment for PLC.





PROJECT DETAILS

PROJECT NAME : 200 CMD Sewage Treatment Plant

CLIENT : CMW, Abu Dhabi

CUSTOMER : Water Bird Water Treatment Chemicals

PLC USED : ABB AC 500 series PLC (PM 573ETH)

SCOPE OF WORK : Electrical control system design, supply, engineering, integration and testing of PLC based motor control center panel.



PROJECT DETAILS

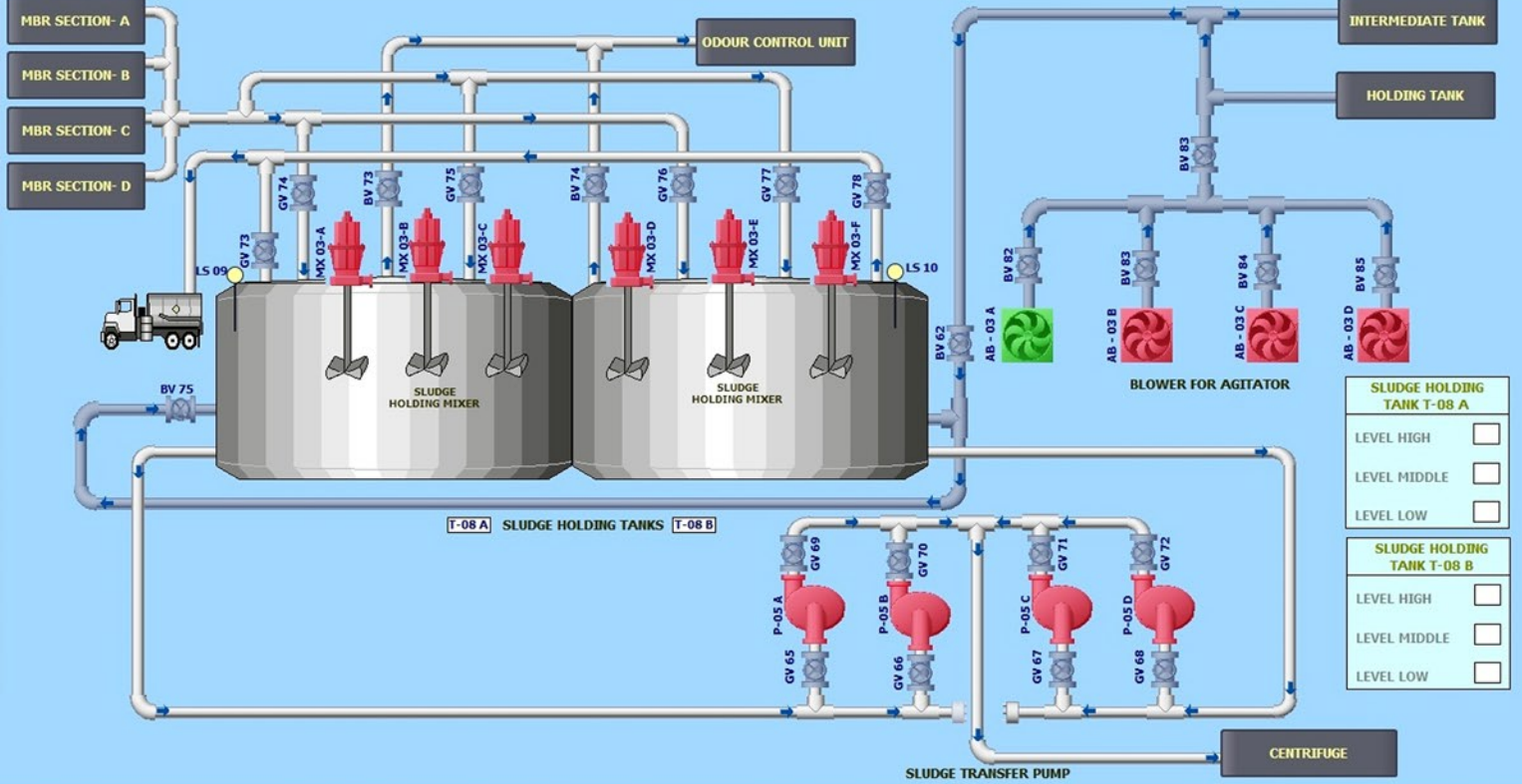
PROJECT NAME : NIZWA 2000M3 PER DAY MBR STP, OMAN

CLIENT : Royal Oman Police

CUSTOMER : VOLTAS

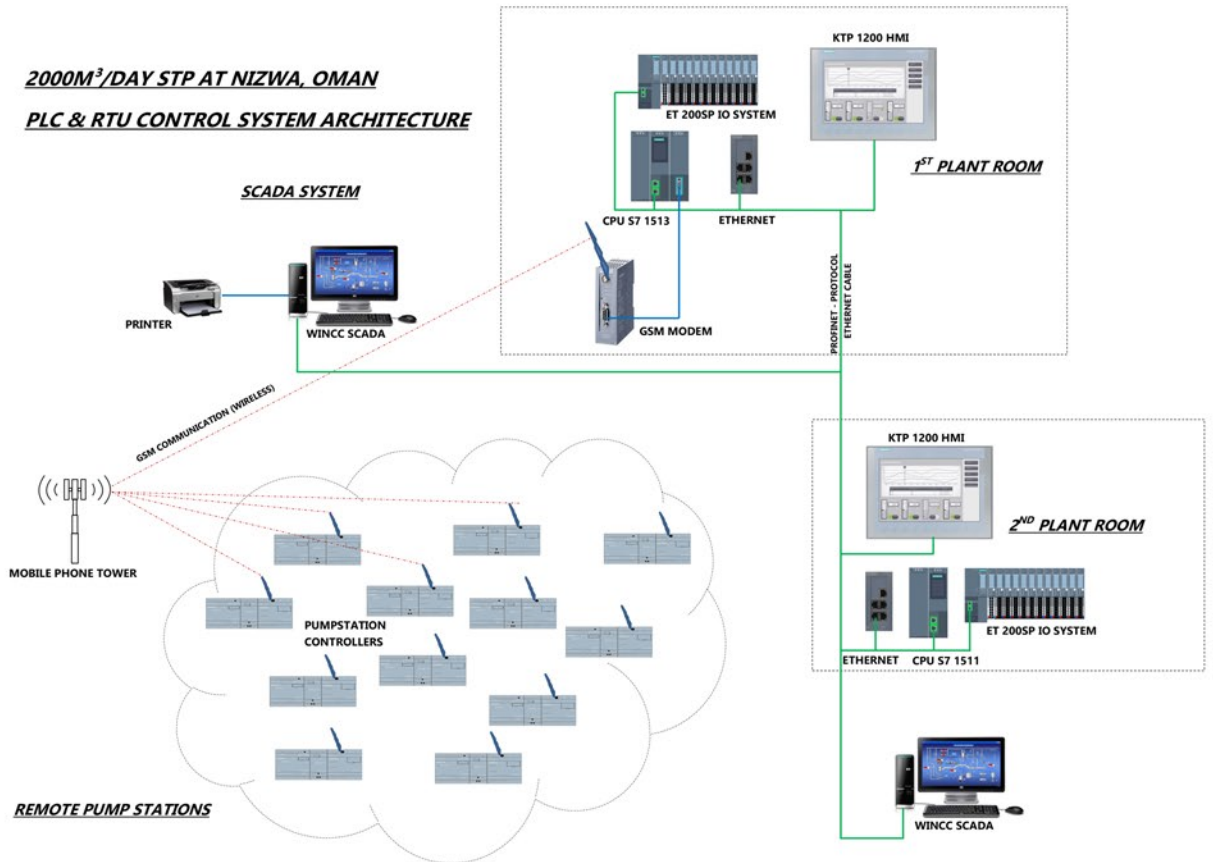
PLC USED : Siemens S7 1500 PLC with ET 200SP Remote IO system & LOGO V8 GSM SYSTEM & HMI.

SCOPE OF WORK : Scope includes complete system design integration and testing commissioning. The master control station is designed with S7 1500 system and which is communicating to the remote pumping station via GSM network and all data's are controlled and monitored from the WinCC master control station.



HOME TREND EQUIPMENT ALARM

**2000M³/DAY STP AT NIZWA, OMAN
PLC & RTU CONTROL SYSTEM ARCHITECTURE**





PROJECT DETAILS

PROJECT NAME : WTP FOR NAJLAN UNIVERSITY
INFRASTRUCTURE PROJECT

CLIENT : Najran University Kingdom of Saudi Arabia

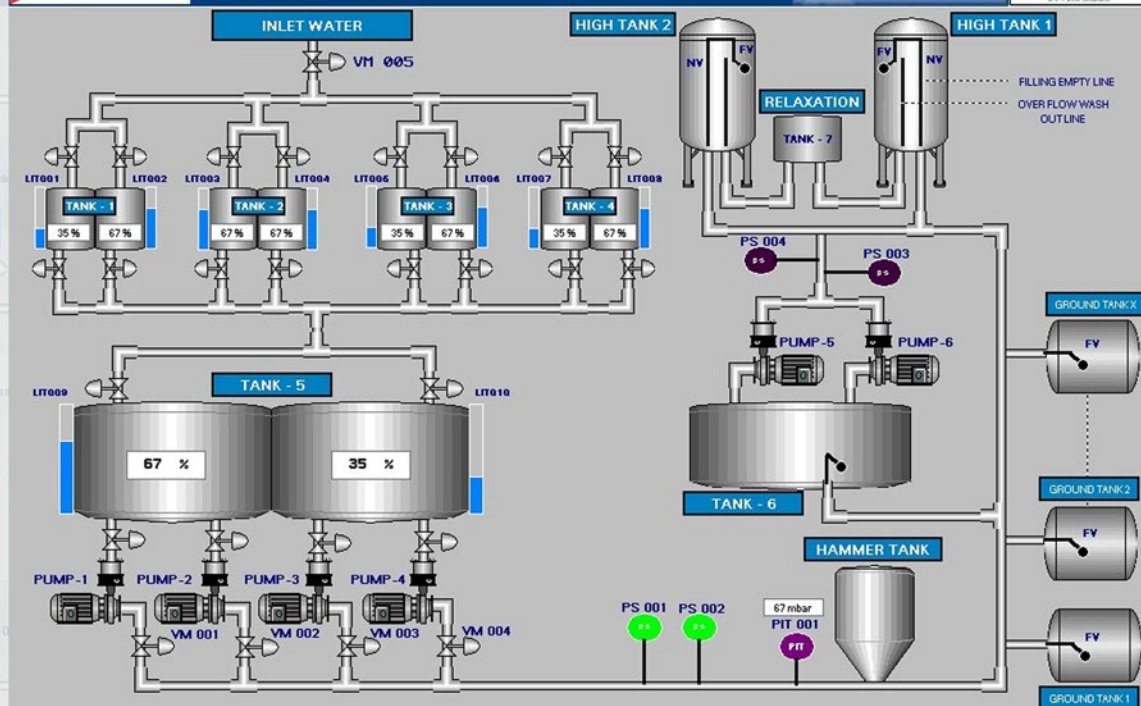
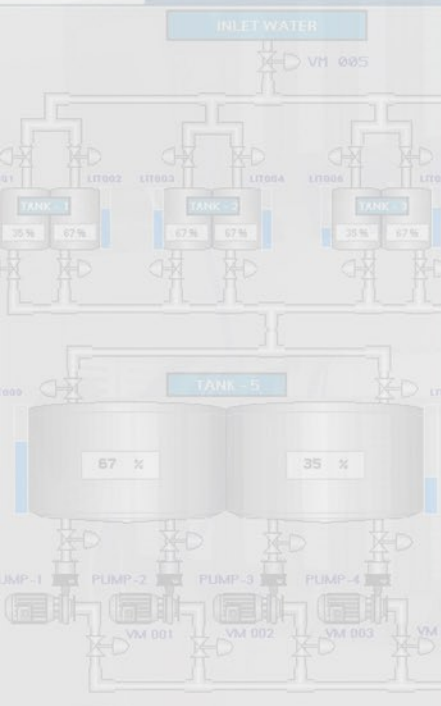
CUSTOMER : Bin Jarallah Group Co. LTD.

SYSTEM : Schneider M340 PLC with 15 inch HMI.

SCOPE OF WORK : Scope includes Design, Engineering,
testing and commissioning.



ERCON GROUP OVERVIEW



VIEW SETTINGS

OVERVIEW SETTINGS HOME ALARM TREND





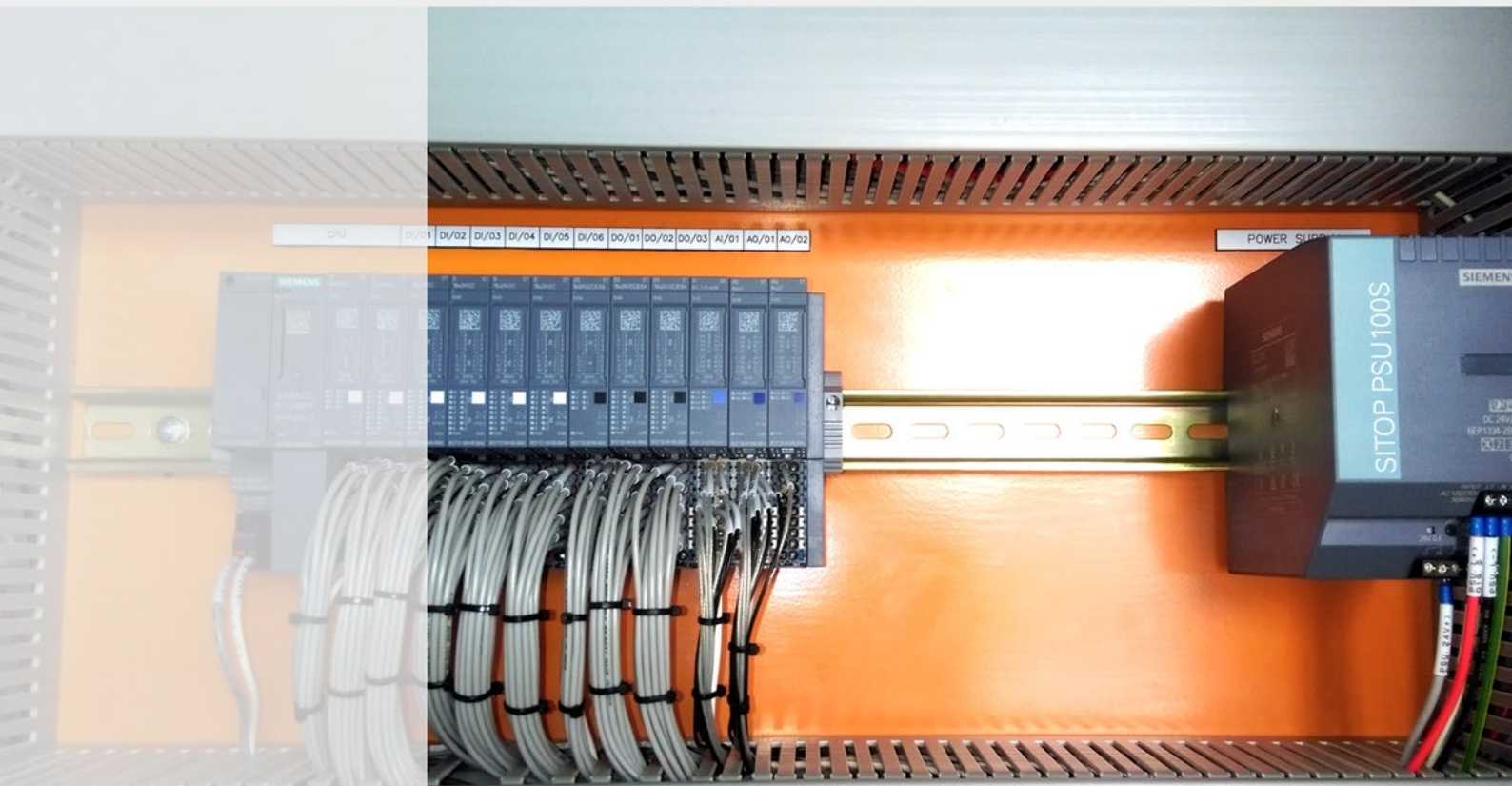
PROJECT DETAILS

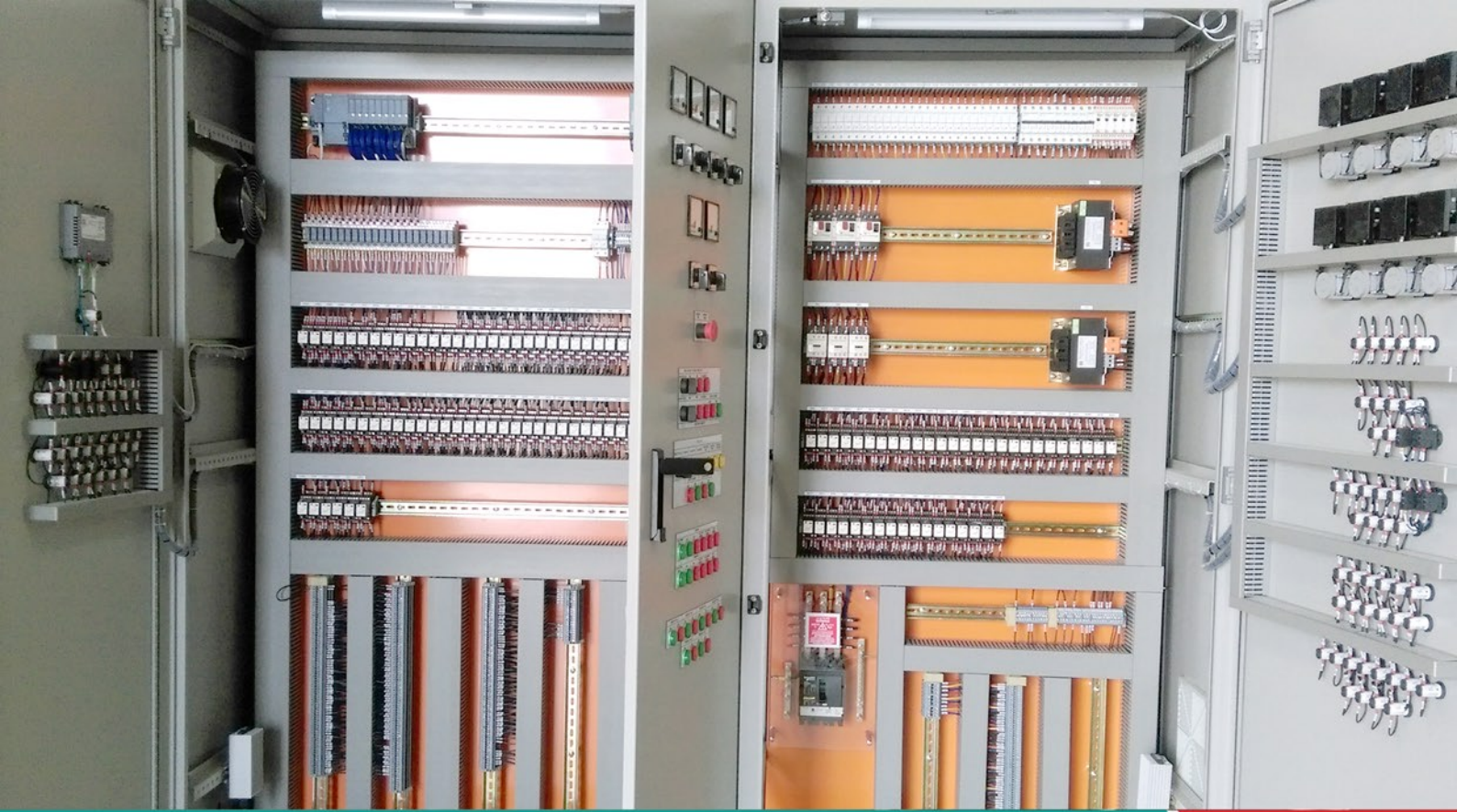
PROJECT NAME : 60 CMH 2 PASS RO SYSTEM

CLIENT : Pact Engineering

SYSTEM : Siemens S7- 300 PLC system with
ET 200 RIO & WinCC SCADA

SCOPE OF WORK : Scope includes supply of MCC panel and
PLC & WinCC SCADA system.





PROJECT DETAILS

PROJECT NAME : HVAC CONTROL PANEL FOR SUBSTATION

CLIENT : Saudi Electricity Company

CUSTOMER : Adwa Al Mushtary Trading & Marketing

SYSTEM : Siemens ET 200 CPU with RIO & HMI

SCOPE OF WORK : Scope includes supply Complete design, integration and testing commissioning.



w w w . m a j t e c . m e



Sharjah
Hamriyah free zone-1, Sharjah, UAE
Tel.: +971 6 7487636, Fax: +971 6 7487635
post@majtec.me

Riyadh

Jeddah

Oman